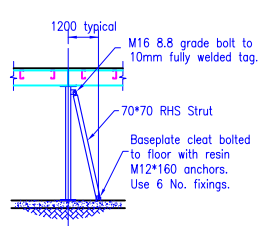
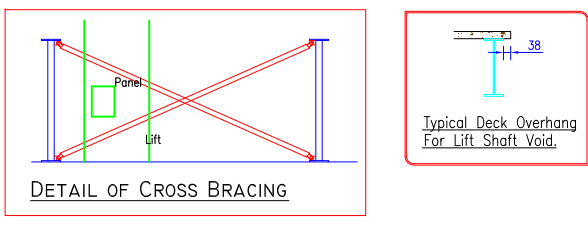


BEAM SECTIONS	COLUMN & BASEPLATE SECTIONS	STABILITY BRACING
Bm01 254x102x22	Col01 070x70x13	Sb01 070x70x13
Bm02 302x102x25	Col02 070x70x13	Sb02 070x70x13
Bm03 302x102x25	Col03 070x70x13	Sb03 070x70x13
Bm04 302x102x25	Col04 070x70x13	Sb04 070x70x13
Bm05 302x102x25	Col05 070x70x13	Sb05 070x70x13
Bm06 302x102x25	Col06 070x70x13	Sb06 070x70x13
Bm07 302x102x25	Col07 070x70x13	Sb07 070x70x13
Bm08 302x102x25	Col08 070x70x13	Sb08 070x70x13
Bm09 302x102x25	Col09 070x70x13	Sb09 070x70x13
Bm10 457x152x60	Col10 100x100x6	Sb10 100x100x6
Bm11 457x152x60	Col11 100x100x6	Sb11 100x100x6
Bm12 457x152x60	Col12 100x100x6	Sb12 100x100x6
Bm13 457x152x60	Col13 100x100x6	Sb13 100x100x6
Bm14 457x152x60	Col14 100x100x6	Sb14 100x100x6
Bm15 457x152x60	Col15 100x100x6	Sb15 100x100x6
Bm16 457x152x60	Col16 100x100x6	Sb16 100x100x6
Bm17 457x152x60	Col17 100x100x6	Sb17 100x100x6
Bm18 457x152x60	Col18 100x100x6	Sb18 100x100x6
Bm19 457x152x60	Col19 100x100x6	Sb19 100x100x6
Bm20 457x152x60	Col20 100x100x6	Sb20 100x100x6
Bm21 457x152x60	Col21 100x100x6	Sb21 100x100x6
Bm22 457x152x60	Col22 100x100x6	Sb22 100x100x6
Bm23 457x152x60	Col23 100x100x6	Sb23 100x100x6
Bm24 457x152x60	Col24 100x100x6	Sb24 100x100x6
Bm25 457x152x60	Col25 100x100x6	Sb25 100x100x6
Bm26 302x102x25	Col26 070x70x13	Sb26 070x70x13
Bm27 302x102x25	Col27 070x70x13	Sb27 070x70x13
Bm28 302x102x25	Col28 070x70x13	Sb28 070x70x13
Bm29 302x102x25	Col29 070x70x13	Sb29 070x70x13
Bm30 302x102x25	Col30 070x70x13	Sb30 070x70x13
Bm31 302x102x25	Col31 070x70x13	Sb31 070x70x13
Bm32 302x102x25	Col32 070x70x13	Sb32 070x70x13
Bm33 302x102x25	Col33 070x70x13	Sb33 070x70x13
Bm34 302x102x25	Col34 070x70x13	Sb34 070x70x13
Bm35 302x102x25	Col35 070x70x13	Sb35 070x70x13
Bm36 302x102x25	Col36 070x70x13	Sb36 070x70x13
Bm37 302x102x25	Col37 070x70x13	Sb37 070x70x13
Bm38 302x102x25	Col38 070x70x13	Sb38 070x70x13
Bm39 302x102x25	Col39 070x70x13	Sb39 070x70x13
Bm40 302x102x25	Col40 070x70x13	Sb40 070x70x13
Bm41 302x102x25	Col41 070x70x13	Sb41 070x70x13
Bm42 302x102x25	Col42 070x70x13	Sb42 070x70x13
Bm43 302x102x25	Col43 070x70x13	Sb43 070x70x13
Bm44 302x102x25	Col44 070x70x13	Sb44 070x70x13
Bm45 302x102x25	Col45 070x70x13	Sb45 070x70x13
Bm46 302x102x25	Col46 070x70x13	Sb46 070x70x13
Bm47 302x102x25	Col47 070x70x13	Sb47 070x70x13
Bm48 302x102x25	Col48 070x70x13	Sb48 070x70x13
Bm49 302x102x25	Col49 070x70x13	Sb49 070x70x13
Bm50 302x102x25	Col50 070x70x13	Sb50 070x70x13
Bm51 302x102x25	Col51 070x70x13	Sb51 070x70x13
Bm52 302x102x25	Col52 070x70x13	Sb52 070x70x13
Bm53 302x102x25	Col53 070x70x13	Sb53 070x70x13
Bm54 302x102x25	Col54 070x70x13	Sb54 070x70x13
Bm55 302x102x25	Col55 070x70x13	Sb55 070x70x13
Bm56 302x102x25	Col56 070x70x13	Sb56 070x70x13
Bm57 302x102x25	Col57 070x70x13	Sb57 070x70x13
Bm58 302x102x25	Col58 070x70x13	Sb58 070x70x13
Bm59 302x102x25	Col59 070x70x13	Sb59 070x70x13
Bm60 302x102x25	Col60 070x70x13	Sb60 070x70x13
Bm61 302x102x25	Col61 070x70x13	Sb61 070x70x13
Bm62 302x102x25	Col62 070x70x13	Sb62 070x70x13
Bm63 302x102x25	Col63 070x70x13	Sb63 070x70x13
Bm64 302x102x25	Col64 070x70x13	Sb64 070x70x13
Bm65 302x102x25	Col65 070x70x13	Sb65 070x70x13
Bm66 302x102x25	Col66 070x70x13	Sb66 070x70x13
Bm67 302x102x25	Col67 070x70x13	Sb67 070x70x13
Bm68 302x102x25	Col68 070x70x13	Sb68 070x70x13
Bm69 302x102x25	Col69 070x70x13	Sb69 070x70x13
Bm70 302x102x25	Col70 070x70x13	Sb70 070x70x13
Bm71 302x102x25	Col71 070x70x13	Sb71 070x70x13
Bm72 302x102x25	Col72 070x70x13	Sb72 070x70x13
Bm73 302x102x25	Col73 070x70x13	Sb73 070x70x13
Bm74 302x102x25	Col74 070x70x13	Sb74 070x70x13
Bm75 302x102x25	Col75 070x70x13	Sb75 070x70x13
Bm76 302x102x25	Col76 070x70x13	Sb76 070x70x13
Bm77 302x102x25	Col77 070x70x13	Sb77 070x70x13
Bm78 302x102x25	Col78 070x70x13	Sb78 070x70x13
Bm79 302x102x25	Col79 070x70x13	Sb79 070x70x13
Bm80 302x102x25	Col80 070x70x13	Sb80 070x70x13
Bm81 302x102x25	Col81 070x70x13	Sb81 070x70x13
Bm82 302x102x25	Col82 070x70x13	Sb82 070x70x13
Bm83 302x102x25	Col83 070x70x13	Sb83 070x70x13
Bm84 302x102x25	Col84 070x70x13	Sb84 070x70x13
Bm85 302x102x25	Col85 070x70x13	Sb85 070x70x13
Bm86 302x102x25	Col86 070x70x13	Sb86 070x70x13
Bm87 302x102x25	Col87 070x70x13	Sb87 070x70x13
Bm88 302x102x25	Col88 070x70x13	Sb88 070x70x13
Bm89 302x102x25	Col89 070x70x13	Sb89 070x70x13
Bm90 302x102x25	Col90 070x70x13	Sb90 070x70x13
Bm91 302x102x25	Col91 070x70x13	Sb91 070x70x13
Bm92 302x102x25	Col92 070x70x13	Sb92 070x70x13
Bm93 302x102x25	Col93 070x70x13	Sb93 070x70x13
Bm94 302x102x25	Col94 070x70x13	Sb94 070x70x13
Bm95 302x102x25	Col95 070x70x13	Sb95 070x70x13
Bm96 302x102x25	Col96 070x70x13	Sb96 070x70x13
Bm97 302x102x25	Col97 070x70x13	Sb97 070x70x13
Bm98 302x102x25	Col98 070x70x13	Sb98 070x70x13
Bm99 302x102x25	Col99 070x70x13	Sb99 070x70x13
Bm100 302x102x25	Col100 070x70x13	Sb100 070x70x13

[315.58] Denotes an unfactored column load in KN



COLOUR SPECIFICATION

Column:	Graphite Grey RAL 7024
Beam:	Graphite Grey RAL 7024
Handrail Tube:	Blue RAL 5010
Handrail Post:	Blue RAL 5010
Kick Rail:	Blue RAL 5010
Stair Stringers:	Graphite Grey RAL 7024
Stair Treads:	Graphite Grey RAL 7024
Joist & Cleats:	Galvanised Finish
Landings:	Graphite Grey RAL 7024
Other:	Graphite Grey RAL 7024

SPECIFICATIONS FOR MEZZANINE FLOOR

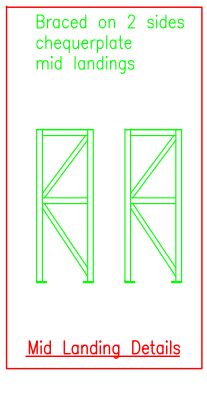
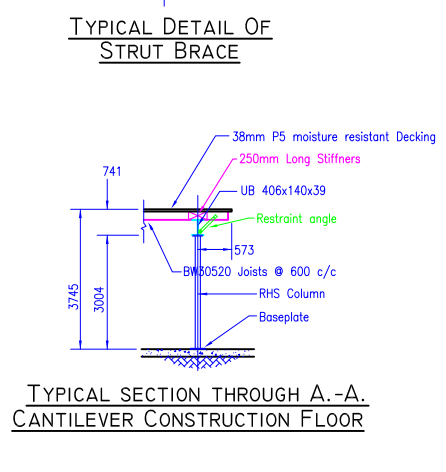
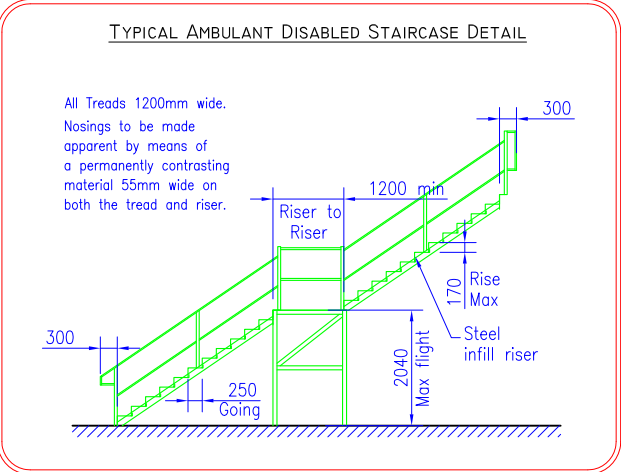
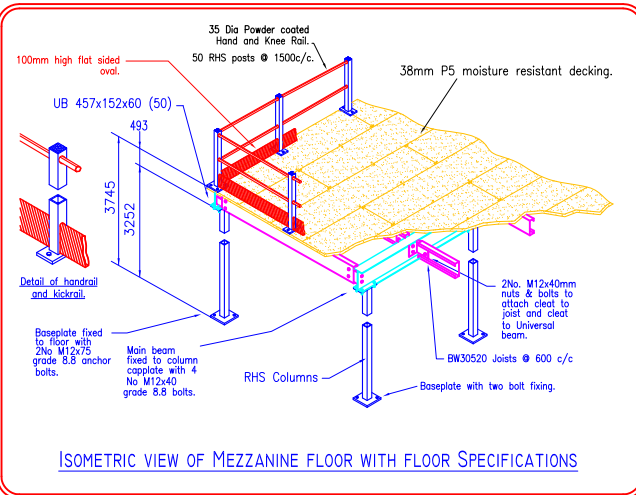
LOADING: Live Load = 7.2kN/m²
Service Load = 0.18kN/m²
Dead Load = 0.35kN/m²

JOISTS: BW30520 Joists @ 600 c/c
Note: Joist supplier/design to be confirmed

STAIRCASE: 100x50x4 RHS Stringers with 1200 wide Steel Treads.
50x25 RHS hand and knee rail both sides.

HANDRAIL: 50 Sq. RHS posts @ 1500 c/c with Powder coated hand and knee rail.

KICKRAIL: 100mm high flat sided oval.



KEY

	Column and baseplate
	Edge protection
	Primary Beams
	Secondary Joists
	70x70x3.0 RHS/
	150x80x8 Base Plate

Note: COLUMNS NOT DESIGNED FOR ACCIDENTAL IMPACT. SUITABLY DESIGNED COLUMN PROTECTORS SHOULD BE SUPPLIED AND INSTALLED BY OTHERS AFTER MEZZANINE COMPLETION IF FORKLIFT USAGE IS INTENDED IN OR AROUND THE MEZZANINE AREA

GEM DISTRIBUTION LTD
Shorten Brook Drive
Daleside Road
Altham Business Park
Accrington
Lancs
BB5 5YH

rda PROJECTS

Innovation House
Daleside Road
Nottingham
NG2 4DH

Tel 0115 9110243
Fax 0115 9110246

DRAWN BY: SG	DATE DRAWN: 19/03/08	SCALE: A1 SHEET 1:100	PROJECT NUMBER: P10529DP /1c
DRAWING APPROVAL	PRINT YOUR NAME: AS BUILT	APPROVAL DATE	
SIGN YOUR NAME:			